

**ESA**  
**Mouse Monoclonal antibody(Mab)**  
**Catalog # AD80074****Specification**

---

**ESA - Product info**

Application	IHC-P
Primary Accession	<a href="#">Q14254</a>
Reactivity	Human
Host	Mouse
Clonality	Monoclonal
Calculated MW	47064

**ESA - Additional info**

Gene ID	2319
Gene Name	FLOT2
<b>Other Names</b>	
Flotillin-2, Epidermal surface antigen, ESA, Membrane component chromosome 17 surface marker 1, FLOT2, ESA1, M17S1	

**Dilution**

IHC-P~~Ready-to-use

**Storage**

Maintain refrigerated at 2-8°C

**Precautions****ESA Antibody is for research use only and not for use in diagnostic or therapeutic procedures.****ESA - Protein Information****Name** FLOT2**Synonyms****Function****ESA1, M17S1****May act as a scaffolding protein within caveolar membranes, functionally participating in formation of caveolae or caveolae-like vesicles. May be involved in epidermal cell adhesion and epidermal structure and function.****Cellular Location****Cell membrane; Peripheral membrane protein Membrane, caveola; Peripheral membrane protein. Endosome. Membrane; Lipid- anchor. Note=Membrane-associated protein of caveolae****Tissue Location****In skin, expressed in epidermis and epidermal appendages but not in dermis.**

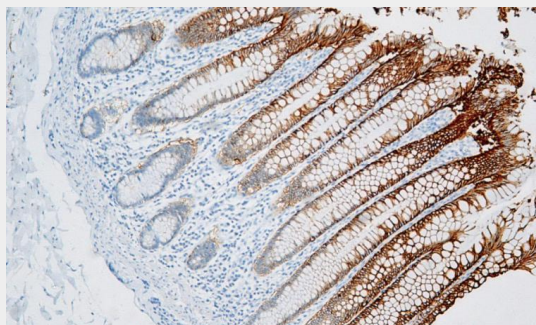
**Expressed in all layers of the epidermis except the basal layer. In hair follicles, expressed in the suprabasal layer but not the basal layer. Also expressed in melanoma and carcinoma cell lines, fibroblasts and foreskin melanocytes**

## ESA - Protocols

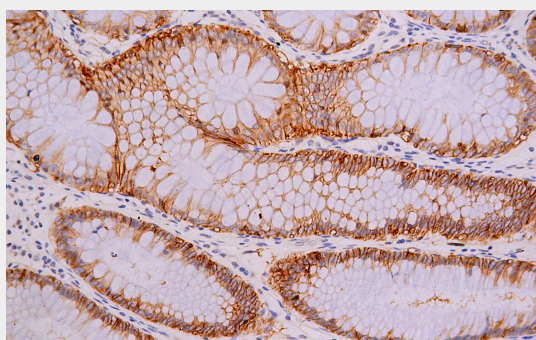
Provided below are standard protocols that you may find useful for product applications.

- [Western Blot](#)
- [Blocking Peptides](#)
- [Dot Blot](#)
- [Immunohistochemistry](#)
- [Immunofluorescence](#)
- [Immunoprecipitation](#)
- [Flow Cytometry](#)
- [Cell Culture](#)

## ESA - Images



### Appendix



Immunohistochemical analysis of paraffin-embedded colorectal carcinoma; tissue using AD80074 performed on the Abcarta® FAIP-30 Fully automated IHC platform. Tissue was fixed with formaldehyde at room temperature, antigen retrieval was by heat mediation with a Citrate buffer (pH6.0). Samples were incubated with primary antibody (Ready-to-use) for 15 min at room temperature. AmpSee™ Detection Systems [Abcepta:AR005] was used as the secondary antibody.